



Nevada County Local Road Safety Plan Webinar

**Trisha Tillotson, Director of Public Works
County of Nevada**

September 9, 2019

Nevada County Local Road Safety Plan (LRSP)



- Plan Development
- Public Outreach
- Next Steps

Local Road Safety Plan **Plan Development**

BACKGROUND

California's Strategic Highway Safety Plan (SHSP) provides a framework for reducing highway fatalities and serious injuries on all public roads. California's SHSP is available at: <http://www.dot.ca.gov/trafficops/shsp/>.

California's SHSP vision:
**California will have
a safe transportation
system for all users**

NEVADA COUNTY'S VISION
**Nevada County will have a
safe transportation system
for all users.**

**Toward Zero Deaths,
every 1 counts**

LRSP – Plan Development

Local Road Safety Plans:

Your Map to Safer Roadways

No matter what your resources, a Local Road Safety Plan will guide you to data-driven solutions and safer roads.

https://safety.fhwa.dot.gov/provencountermeasures/local_road/



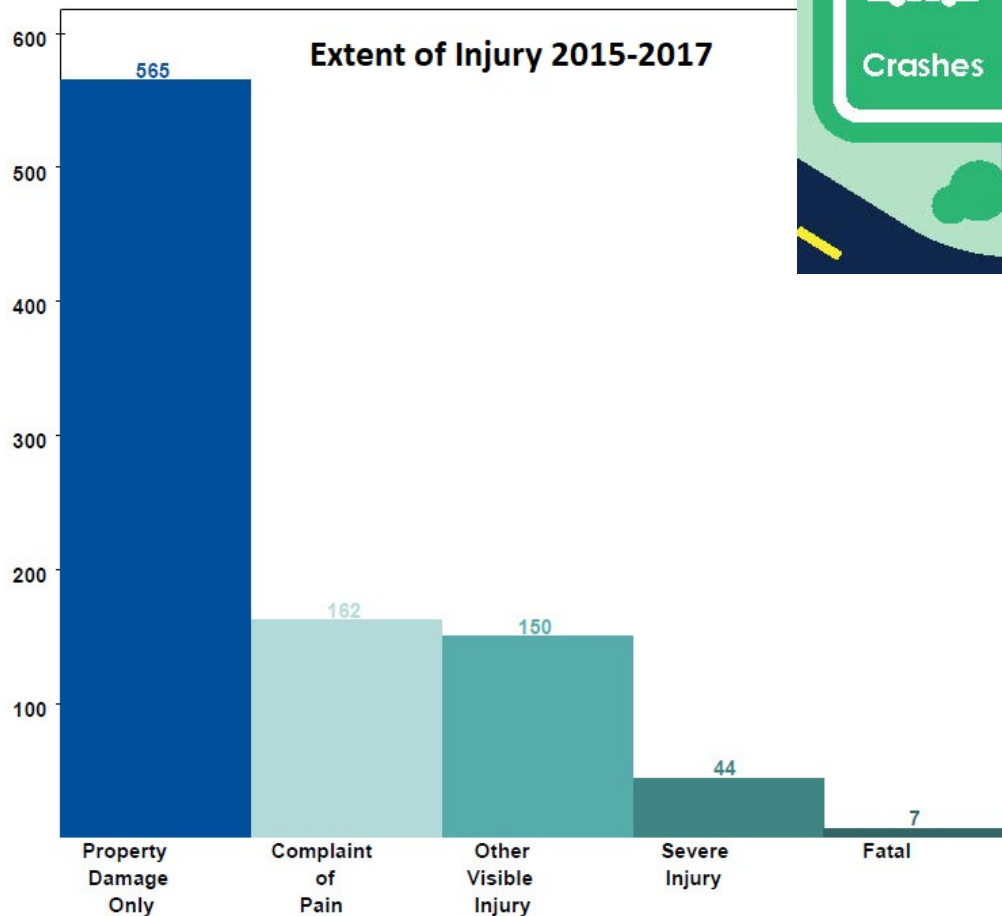
LRSP – Plan Development

- Identified stakeholders

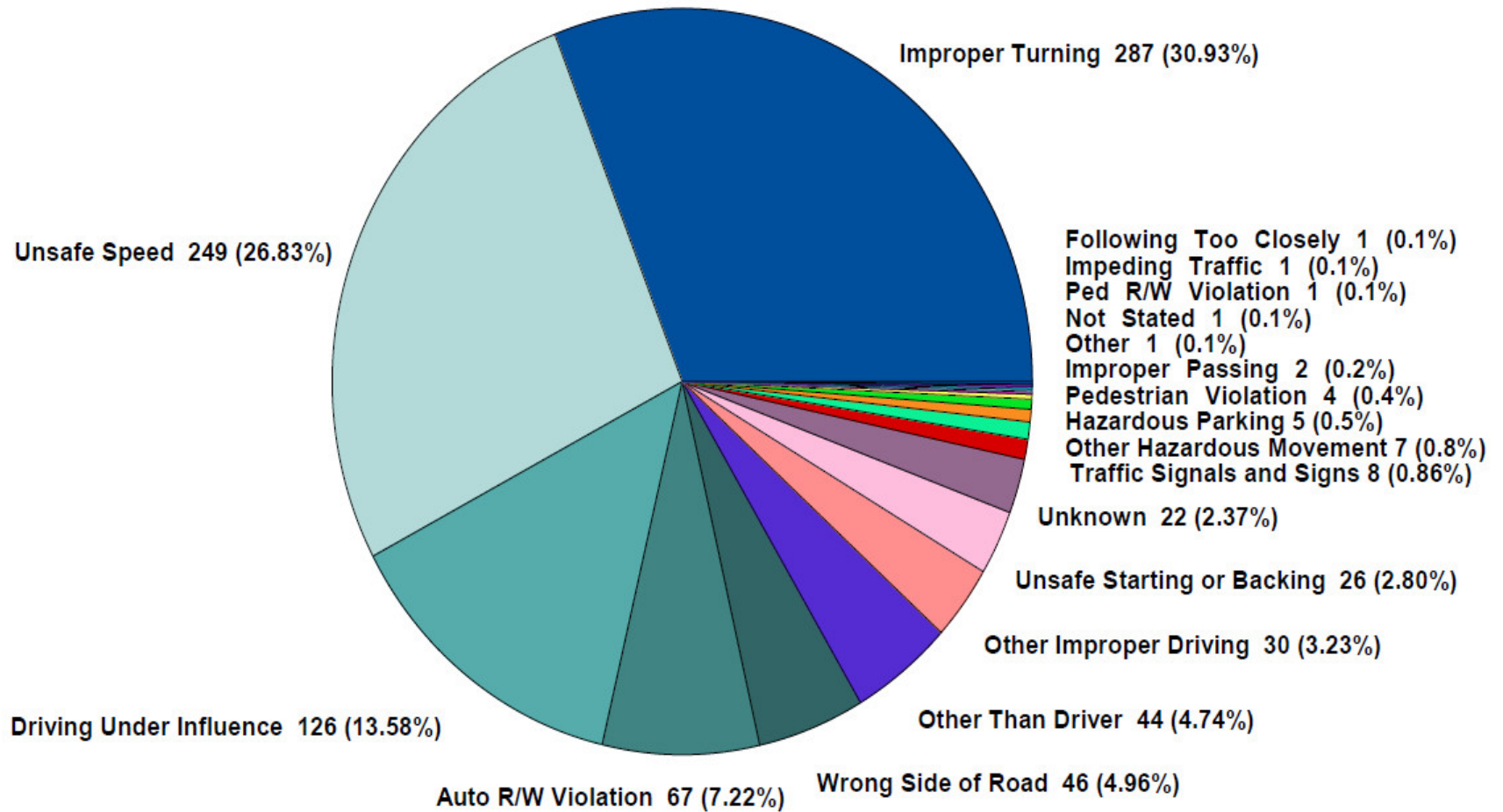


LRSP – Plan Development

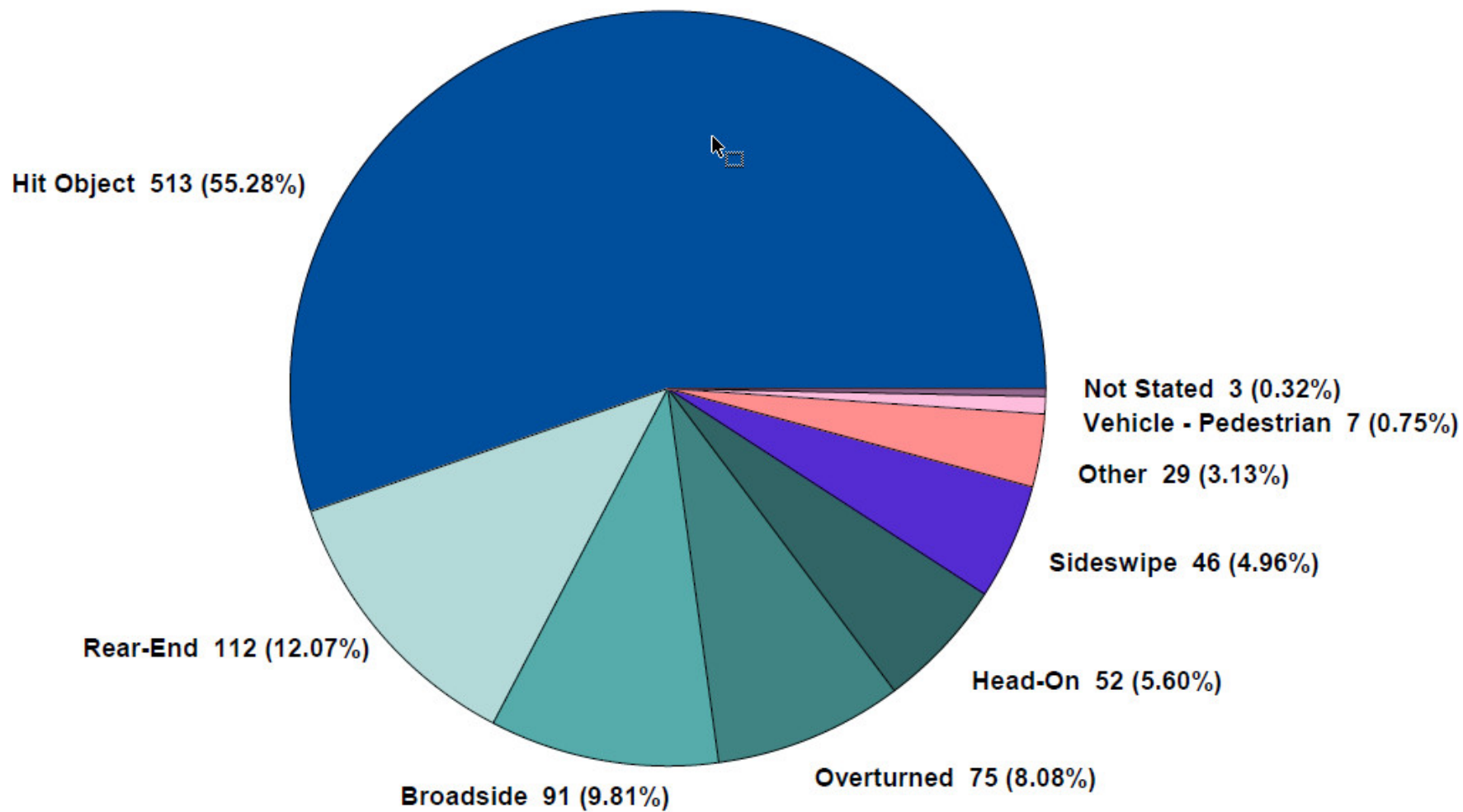
- Analyzed safety data



Nevada County Primary Collision Factors 2015-2017



Nevada County Collision Types 2015-2017



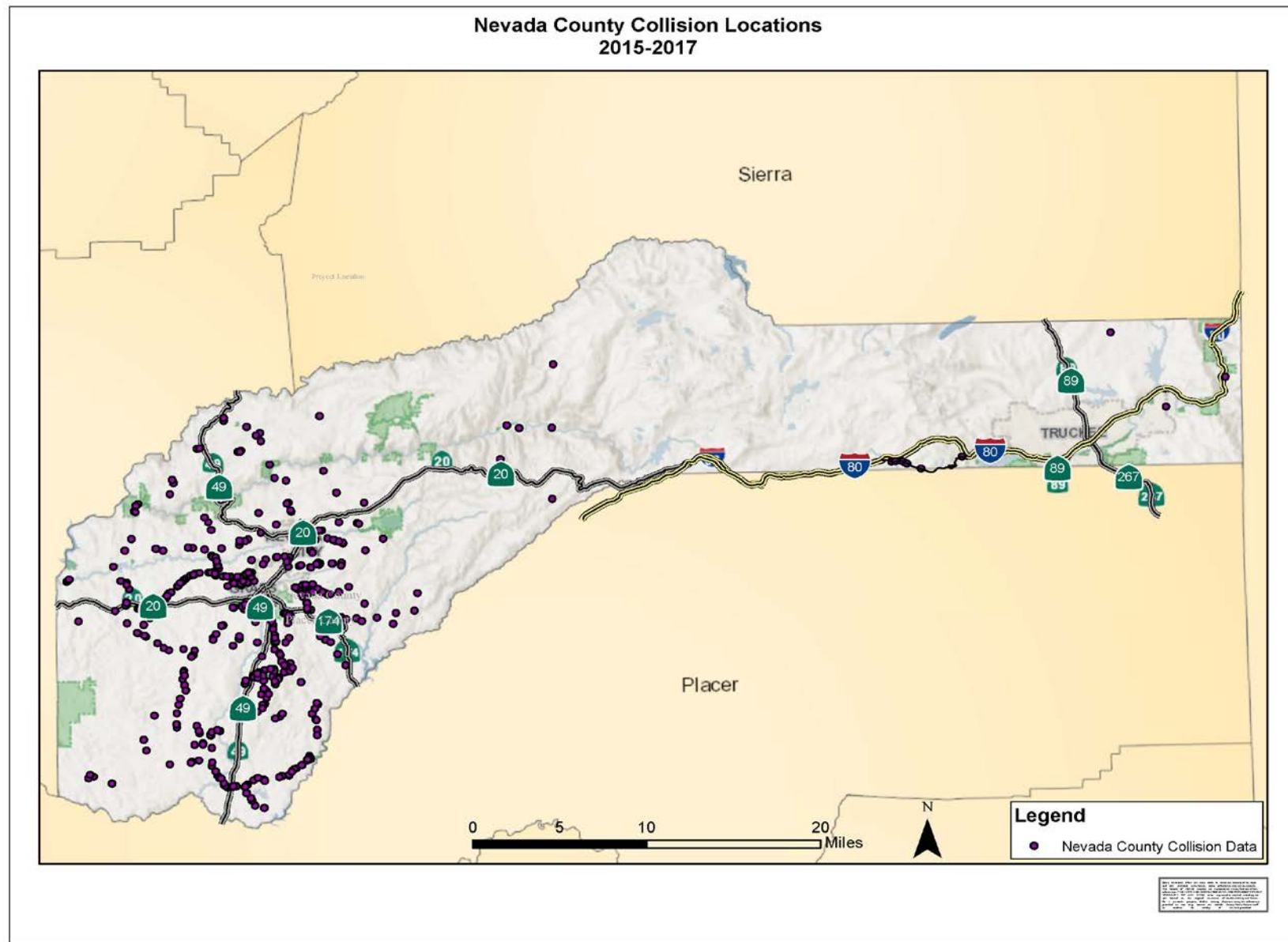
When do most collisions occur in Nevada County?



	2017	2016	2015	3 yr summary	%
Collisions By Time of Day					
Day	204	203	193	600	65%
Night	124	89	111	324	35%
Unknown	0	0	3	3	0%
Total	328	292	307	927	

Primary Collision Times of Day 2015-2017

Where are collisions occurring in Nevada County?



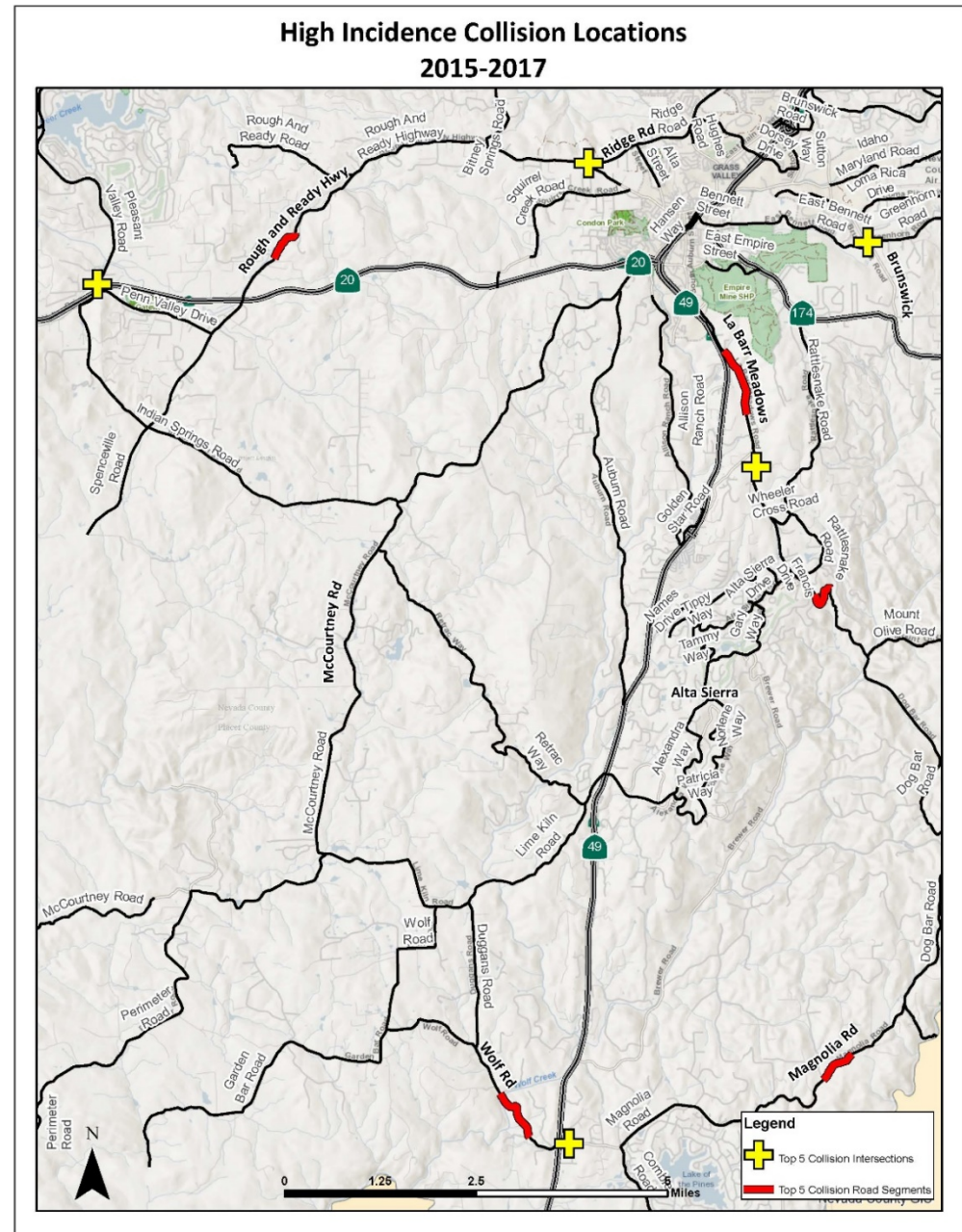
Where are the top 5 collision locations on County roads?

Intersections

- 1) Brunswick at Greenhorn
- 2) Higgins at Combie
- 3) Ridge at Rough and Ready
- 4) Dog Bar at Cole Way
- 5) Pleasant Valley Rd at Commercial

Road segments

- 1) La Barr Meadows – Old White Toll to Amsel Way
- 2) Wolf – Katy Lane to Eaglestone Road
- 3) Dog Bar – Georgia Way to Lorie Dr
- 4) Rough and Ready – Grub Creek to Valley Drive
- 5) Magnolia – Spring Ranches Rd to Adamson Dr



LRSP – Plan Development

WHAT HAS BEEN COMPLETED SO FAR

- Identified proven solutions.



Nevada County Local Road Safety Plan (LRSP)

- Plan Development
- Public Outreach
- Next Steps



Local Road Safety Plan Public Outreach



2018 Nevada County Local Road Safety Plan



Department of Public Works
10/26/2018

Emphasis Areas

Emphasis Area 1: Improper Turning and Broadside Collisions

- Improper Turning is the top primary collision factor
- Broadside Collisions are the 3rd highest collision type

Goals & Strategies:

- Add/revise signing at key locations to reduce collision rates using HSIP funding
- Implement vegetation management on road shoulders to improve sight distance using current funding supplemented w/ grant funds

Suggestions?

Emphasis Areas

Emphasis Area 2: Unsafe Speeds, Object Impact and Rear-End Collisions

- Unsafe Speed is the 2nd highest collision factor
- Object Impact and Rear-End Collisions are the top 2 collision types

Goals & Strategies:

- Add/revise signing at key locations to reduce collision rates using HSIP funding
- Consider traffic calming measures as funds become available
- Utilize the speed trailer upon request
- Increase public education on dangers of speeding and driving distracted

Suggestions?

Emphasis Areas

Emphasis Area 3: Driving Under the Influence (DUI)

- DUI is the 3rd highest collision factor

Goals & Strategies:

- Increase public education
- Increase # of DUI checkpoints

Suggestions?

Nevada County Local Road Safety Plan (LRSP)

- Plan Development
- Public Outreach
- Next Steps



Local Road Safety Plan Next Steps

WHAT'S NEXT

- Implement solutions.



Thank you!



Trisha M. Tillotson, P.E.
Director of Public Works
County of Nevada
950 Maidu Avenue
Nevada City, CA 95959
(530) 265-1411 fax (530) 265-9849
trisha.tillotson@co.nevada.ca.us